

FOR PARENT CARERS' CHILDREN AND YOUNG PEOPLE WITH  
SPECIAL EDUCATION NEEDS AND/OR DISABILITIES

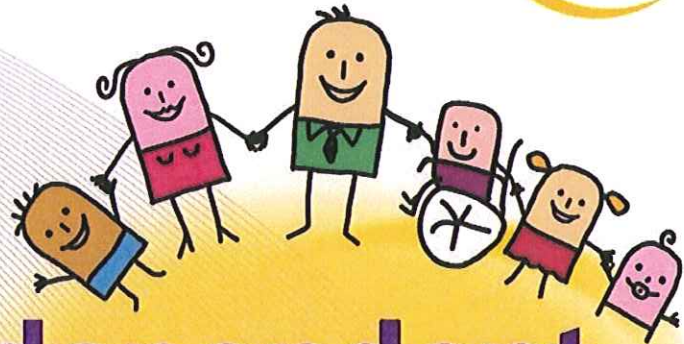
independent  
support



Are you...  
the parent carer of a  
child who currently has  
a statement of special  
Education Needs?

Is your...  
child currently being  
assessed for an Education,  
Health and Care Plan?

Are you...  
a young person (up to 25 years)  
who currently has a Learning  
Disability Assessment or are  
looking to request an Education  
Health and Care plan?



# independent support programme

The Independent Support Programme is a new government funded initiative to support Parent Carers, children and young people who are going through the Education Health and Care Plan (EHCP) process. The Independent Support Programme is free and offers completely INDEPENDENT AND IMPARTIAL information and support.

If so... the **Independent Support (IS) Programme**  
could be for you!

'Helping your  
voice be heard'

### **Some of the ways we can help:**

You can get Independent Support in a number of ways. For example through face-to-face talking, telephone help or email. Some of the things IS will be able to help you with can include:

- Help filling in your "Our story/My story" paperwork
- Provide information on Personal Budgets
- Help you understand the EHCP process and what an EHCP is
- Act as a named contact for you whilst you are going through your EHCP journey and help you gather any information you may need for your EHC plan.
- Support you to get additional help when you have an issue which our Independent Support team are unable to help you with (this is known as signposting)

Council  
for disabled  
children

PEOPLE MATTER IW



To find out more about independent support contact Ellie Marshall:  
Email: [ellie.marshall@doncaster.gov.uk](mailto:ellie.marshall@doncaster.gov.uk)  
Address: Doncaster Council, Floor 3, Civic Office, Waterdale,  
Doncaster, DN1 3BU  
or visit [www.doncaster.gov.uk/services/schools/saidsend](http://www.doncaster.gov.uk/services/schools/saidsend)